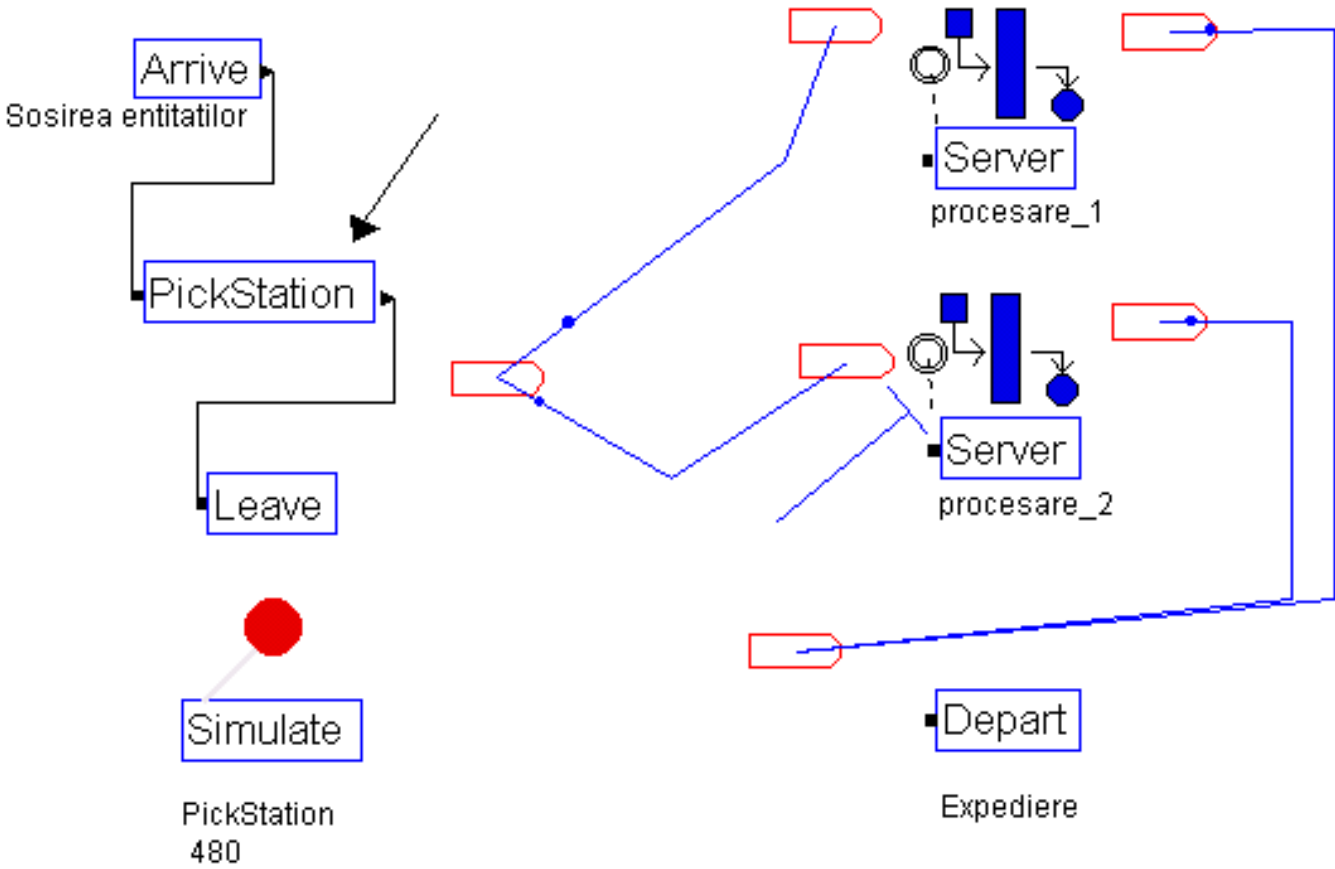
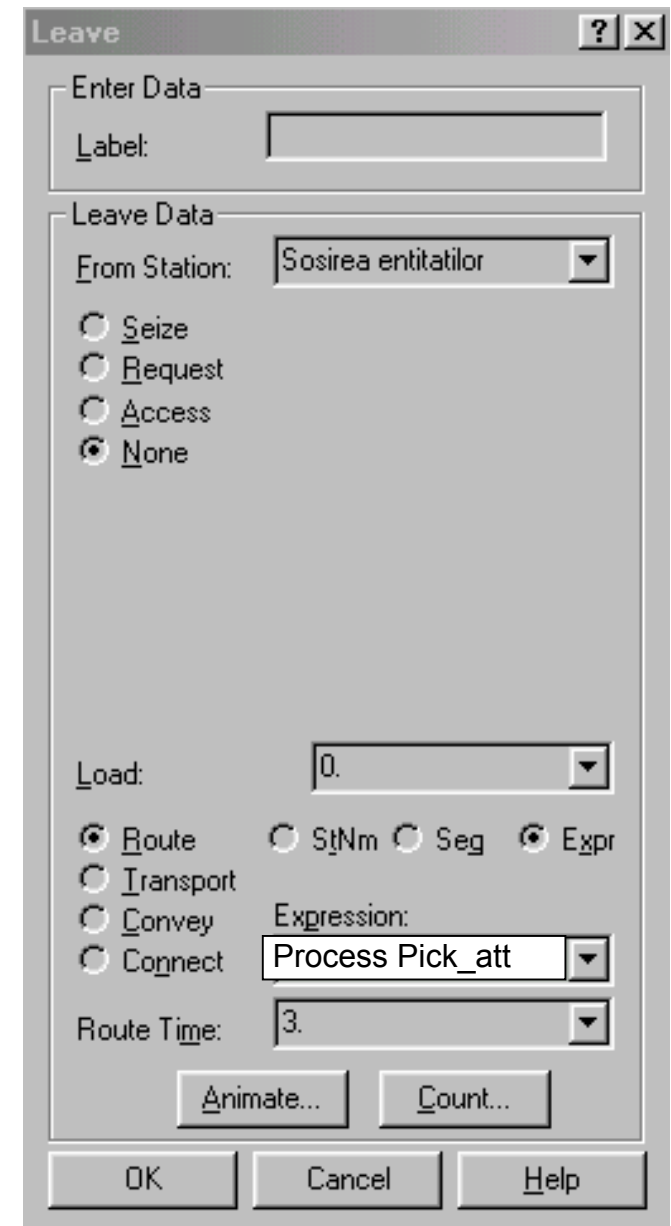
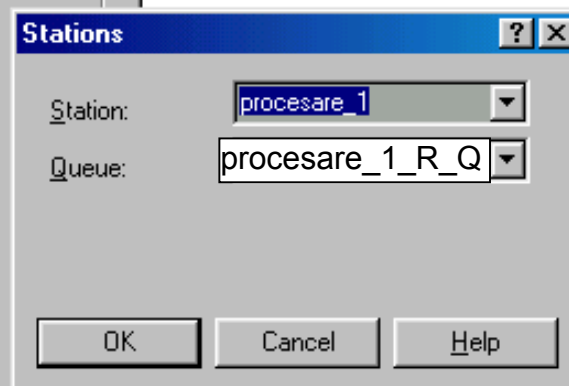
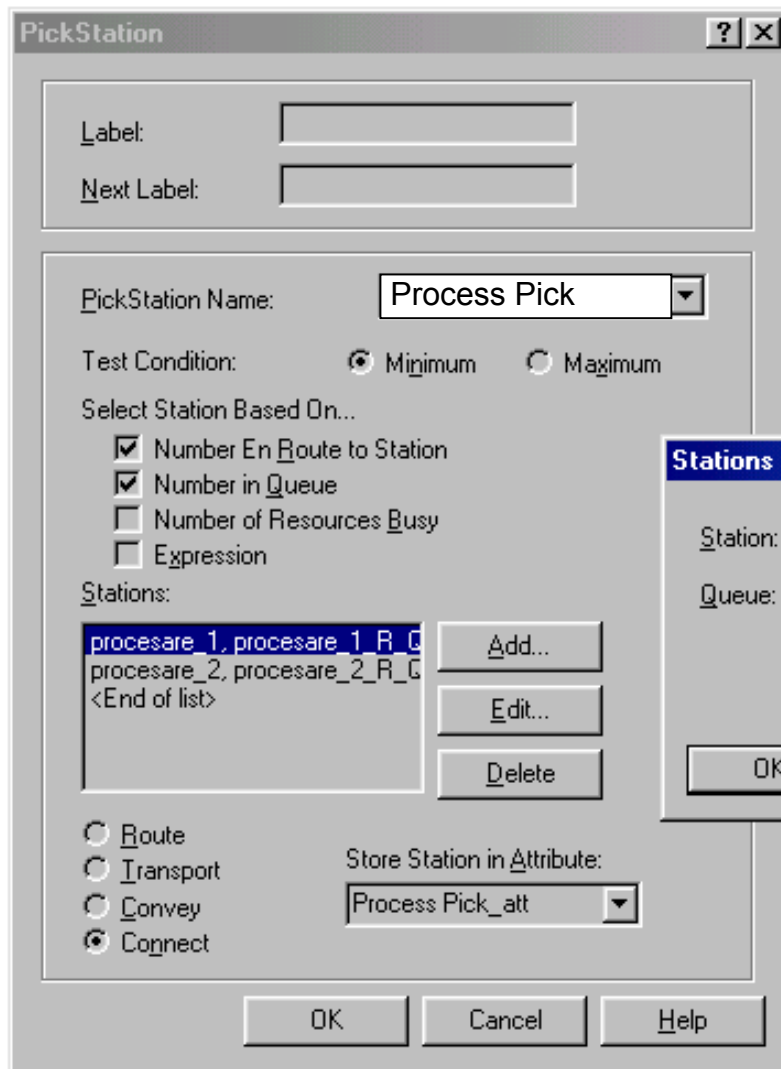


# Exemplu de utilizare a modului PickStation

In modul PickStation entitatile vor alege statia cu cele mai putine entitati pe parcurs si la coada. Denumirea statiei alese este stocata in atributul "Process pick".





**Server** [?] [X]

Enter Data

Label:  Station: procesare\_1

Server Data

Resource: procesare\_1\_R   
Capacity Type: Capacity   
Capacity: 1  
 Resource Statistics  
Process Time: NORM(4,4)

Leave Data

Route  StNm  Seg  Expr  
 Connect  
Station: Expediere   
Route Time: 3.

